

# **FLEETCRAFT**

QUALITY PARTS FOR THE TRUCKING INDUSTRY



## **QUICK REFERENCE CATALOG** **VOLUME II**

*A Perfect Solution For The Cost Conscious  
Customer That Demands OEM Quality!*

## POLICIES

### **Freight**

Fleetcraft will ship orders freight prepaid that meet the minimum dollar amount in effect to qualify for prepaid shipments. Shipment will be made via the Fleetcraft Delivery System. At Fleetcraft's discretion, shipment may also be made by other means, such as common carrier.

### **Small Package Freight Policy**

Orders which conform to the weight and dollar limits in effect at the time may qualify for UPS/FedEx or similar shipment.

### **Minimum Orders**

Dollar limits, excluding freight, govern minimum order quantities in effect at time of shipment.

### **Credit Terms**

Net 30 days from date of invoice. Past Due accounts are subject to an interest charge at the maximum legal rate and will be placed on COD terms until open account status is approved.

### **Shortages and Adjustments**

Claims for shortages must be made within 48 hours of receipt of order.

Shortage claims on orders shipped on other than the Fleetcraft Delivery System must be filed with the delivering carrier. A copy of the packing list and invoice must be provided.

### **Returns**

All returns must be approved in advance and issued a Return Goods Authorization (RGA) number. A copy of the packing list and invoice must be provided.

### **Disclaimer**

The information contained in this catalog, to the best of our knowledge, is correct. Great pains have been taken in proofing this information. However, Fleetcraft does not guarantee the enclosed data.

Illustrations and similar data in this catalog are intended only as an aid in identifying general configurations and have been obtained and developed from supplier data. Although Fleetcraft believes that such illustrations are accurate, and data correct, errors may exist and further verification of the part may be necessary.

FLEETCRAFT CANNOT, AND DOES NOT ACCEPT OR ASSUME ANY RESPONSIBILITY OR LIABILITY FOR ERRORS, OMISSIONS OR DAMAGE RESULTING FROM THE USE OR OTHER APPLICATIONS OF SUCH INFORMATION. THERE ARE NO SPECIAL WARRANTIES, EXPRESSED OR IMPLIED. FLEETCRAFT SHALL NOT BE LIABLE FOR SPECIAL, INCIDENTAL OR CONSEQUENTIAL DAMAGES FROM THE USE OR OTHER MODIFICATIONS OR APPLICATIONS OF THE INFORMATION CONTAINED HERE WITHIN.

**Contact Your Authorized FLEETCRAFT® Distributor Today**

## THE FLEETCRAFT ADVANTAGE



**20** + Years of proven products!

- OEM Quality
- Aftermarket Pricing
- 100% Satisfaction Guaranteed Or Your Money Back For Up To 1 Year With No-Restocking Fees!

## WHY FLEETCRAFT?

**A Perfect Solution For The Cost Conscious Customer That Demands OEM Quality!**

# WIDE PRODUCT OFFERING

**Most Popular SKU Coverage To Support High Volume, Competitive Price Point Demands**

**Guaranteed 100% OEM Quality!**

### AIR BRAKES

Air Brake Hoses.....	4
Air Brake Valves .....	5-6
Air Dryers & Components.....	7
Bulk Air Hose .....	4
Coiled Air .....	7
Governors.....	7
Nylon Tubing.....	4

### BRAKE & WHEEL END

Bearings .....	8
Brake Chambers.....	8
Brake Drums.....	9
Brake Hardware Kits.....	9
Cams & Cam Kits .....	10
Clevis Kits.....	11
Hub Caps.....	11
Slack Adjusters .....	11
Steel Wheels .....	12
Wheel End Fasteners.....	12

### EXHAUST

Clamps .....	13
Flex Tubing.....	13
Muffler.....	13

### SAFETY PRODUCT

First Aid Kit .....	14
Flags - Signs.....	14
Triangle Kits.....	14

### SUSPENSION & DRIVETRAIN

Air Springs .....	15
Center Bearing .....	16
Leveling Valves.....	16
U-Joints .....	16

### TRAILER PRODUCTS

3 IN 1 Cable.....	16
Accessories .....	17
Body Parts .....	27
Cargo Control .....	17
Doors - Roll Up .....	18
Doors - Roll Up Panels .....	19
Doors - Roll Up Accessories.....	19-21
Floor Screws - Rivets .....	26
Gladhands .....	24
Landing Gear.....	22
Landing Gear Accessories.....	23
Mud Flaps.....	17
Primary Wire / Cable / Ties .....	25
Power Cords.....	24

### PART NUMBER INDEX.....29-31





**AIR BRAKES**

**AIR BRAKE VALVES**

Part No.	Description	Replaces
<b>FC065066</b>	QR Valve, 1 PSI Max, 1/2" - 3/8" NPTF	BENDIX® 802745
<b>FC065067</b>	QR Valve, 1 PSI Max, 3/8" - 3/8" NPTF	BENDIX® 802743
<b>FC065104</b>	R-12® Relay Valve	BENDIX® 065104
<b>FC065145</b>	BP-R1® Type Bobtail Proportioning Valve	BENDIX® 65145N
<b>FC065146</b>	BP-R1® Type Bobtail Proportioning Valve	BENDIX® 65146N
<b>FC065186</b>	MV-3® Type Control Module, 1/8" NPT	BENDIX® 800519
<b>FC065187</b>	MV-3® Type Control Module, 1/4" NPT	BENDIX® 800573
<b>FC065437</b>	SR-5™ Spring Brake Valve	BENDIX® K033221
<b>FC065439</b>	SR-5™ Spring Brake Valve	BENDIX® K033223
<b>FC065624</b>	AD-IP® Type Dryer Cartridge	BENDIX® 109493X
<b>FC065661</b>	PP-DC® Control Valve	BENDIX® 065661
<b>FC101112</b>	SR-4™ Type Spring Brake Valve, 3/4" NPT Resv	BENDIX® OR101112X
<b>FC101622</b>	SR-4™ Type Spring Brake Valve, 1/2" NPT Resv	BENDIX® 101622
<b>FC101818</b>	E-7™ Type Dual Foot Valve	BENDIX® 101818N
<b>FC102626</b>	R-12® Vertical Relay Valve	BENDIX® 102626N
<b>FC103009</b>	R-12® Horizontal Relay Valve	BENDIX® 103009N
<b>FC103010</b>	R-14® Horizontal Relay Valve	BENDIX® 103010N
<b>FC103028</b>	R-14® Vertical Relay Valve	BENDIX® 103028N
<b>FC103061</b>	SR-2™ Type Spring Brake Valve, 1/2" NPT Resv	BENDIX® OR103061X
<b>FC103081</b>	R-7™ Modulating Spring Brake Valve	BENDIX® 103081N
<b>FC12104</b>	Drain Valve, Manual, 4' Cable	Haldex 12104
<b>FC12105</b>	Drain Valve, Manual, 5' Cable	Haldex 12105
<b>FC131081</b>	ST-4™ Type Safety Valve	BENDIX® 131081
<b>FC228750</b>	LP-3™ Type Low Pressure Indicator, 60 PSI	BENDIX® 228750N
<b>FC229635</b>	TW-1™ Flipper Valve	BENDIX® 229635N
<b>FC229859</b>	QR-1® Valve, 3/8" - 3/8" Ports	BENDIX® 229859N
<b>FC229860</b>	QR-1® Valve, 3/8" - 1/2" Ports	BENDIX® 229860N
<b>FC23000</b>	Single Check Valve, 2 - 1/2" Ports	Haldex KN23000
<b>FC23010</b>	Single Check Valve, 2 - 3/8" Ports	Haldex KN23010
<b>FC26020</b>	RT-4 Multi-Function Valve	Haldex KN26020



**AIR BRAKES**

**AIR BRAKE VALVES**

Part No.	Description	Replaces
<b>FC276566</b>	PP-1® Control Valve, 20 PSI	BENDIX® 276566N
<b>FC276567</b>	PP-1® Control Valve, 40 PSI	BENDIX® 276567N
<b>FC277147</b>	PR-2™ Type Pressure Protection Valve, 65 PSI	BENDIX® 277147N
<b>FC277863</b>	E-3™ Type Single Circuit Foot Valve	BENDIX® 277863N
<b>FC278614</b>	Double Check Valve, 3 - 3/8" Ports	BENDIX® 278614N
<b>FC278615</b>	Double Check Valve, 3 - 1/4" Ports	BENDIX® 278615N
<b>FC279000</b>	Tractor Protect Valve, TP-3®	BENDIX® 279000
<b>FC279416</b>	LP-3™ Type Low Pressure Indicator, 60 PSI	BENDIX® 279416N
<b>FC280809</b>	DC-4® Type Double Check Valve, 4 - 3/8" Ports	BENDIX® 280809N
<b>FC281865</b>	RE-6® Relay Valve, 3/8" Supply Port	BENDIX® 281865
<b>FC281923</b>	DV-2™ Type Automatic Drain Valve	BENDIX® 281923N
<b>FC284142</b>	ST-3™ Type Safety Valve, 1/4" NPT, 150 PSI	BENDIX® 284142N
<b>FC284760</b>	E-7™ Type Dual Foot Valve	BENDIX® 284760N
<b>FC28500</b>	RG2 Relay Valve, 3/8" Reservoir	Haldex KN28500
<b>FC28510</b>	RG2 Relay Valve, 1/2" Reservoir	Haldex KN28510
<b>FC28520</b>	RG2 Relay Valve, 1/2" Reservoir	Haldex KN28520
<b>FC28600</b>	Full Function Valve, 3/4" Reservoir	Haldex KN28600
<b>FC28601</b>	Full Function Valve, 1/2" Reservoir	Haldex KN28601
<b>FC286171</b>	E-6® Dual Brake Valve	BENDIX® 286171N
<b>FC286364</b>	SR-1™ Type Spring Brake Valve, 55 PS	BENDIX® 286364N
<b>FC286500</b>	PR-4™ Type Pressure Protection Valve, 85 PSI	BENDIX® 286500N
<b>FC288239</b>	PP-7™ Supply Valve	BENDIX® 288239N
<b>FC288605</b>	TP-5™ Type Tractor Protection Valve	BENDIX® 288605N
<b>FC289144</b>	LQ-4™ Type Front Axle Ratio Valve	BENDIX® 289144N
<b>FC289714</b>	Quick Release Valve	BENDIX® 289714N
<b>FC30400</b>	Emergency Relay Valve, Pre-121	Haldex KN30400
<b>FC4017A</b>	Treadle Kit, Aluminum for Brake Valves	Haldex SN4017A
<b>FC54079</b>	Pilot Valve, 3-Way Remote Mount	Haldex 90554615
<b>FC54088</b>	Manual On/Off Valve	Haldex 90054088
<b>FC72420</b>	Alcohol Evaporator, 40 oz., 1/2" NPT	Haldex A72420



## AIR BRAKES

### AIR DRYERS & COMPONENTS

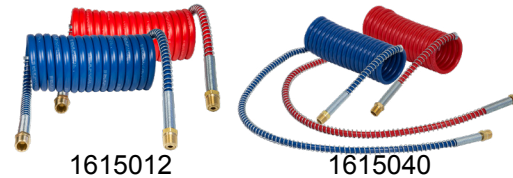
Part No.	Description	Replaces
<b>FC022105</b>	AD-IP® / AD-IS® Type Purge Valve Kit	BENDIX® K022105
<b>FC107695</b>	Bracket Kit Air Dryer	BENDIX® 107695
<b>FC109869</b>	Wire Harness Air Dryer	BENDIX® 109869N
<b>FC5008414</b>	Cartridge Kit AD-IS®, AD-SP®, AD-RP™	BENDIX® 5008414
<b>FC65225</b>	AD-9® Type Air Dryer	BENDIX® 065225
<b>FC065612</b>	AD-IP® Type Air Dryer	BENDIX® 065612
<b>FC950011</b>	Wabco Type Air Dryer Cartridge Kit	Meritor R950011
<b>FC950068</b>	Wabco Type Coalescing Air Dryer Cartridge	Meritor R950068A
<b>FC955205</b>	Wabco Type Integral Regeneration Air Dryer Kit	Meritor R955205



### COILED AIR

#### 15' Coiled Air Lines

Part No.	Description
<b>1615012</b>	1/2" Double Swivel 2 - 12" Leads
<b>1615012B</b>	Blue - 1/2" Double Swivel 2 - 12" Leads
<b>1615012R</b>	Red - 1/2" Double Swivel 2 - 12" Leads
<b>1615040</b>	1/2" Double Swivel 1 - 12" & 1 - 40" Lead
<b>1615040B</b>	Blue - 1/2" Double Swivel 1 - 12" & 1 - 40" Lead
<b>1615040R</b>	Red - 1/2" Double Swivel 1 - 12" & 1 - 40" Lead



#### Features & Benefits:

- Temp Rating: 212°F (100°C) to -40°F
- For 150 psi Operating Systems
- 2 Pc D.O.T. Brass Fittings
- 17.4' Long Tubing
- Coiled, 1/2" O.D. Reinforced Nylon

### GOVERNORS

Part No.	Description	Replaces
<b>FC18530</b>	Piston Type Governor	Haldex KN18530
<b>FC275491</b>	D2 Type Governor, 100-120 PSI	BENDIX® 275491N
<b>FC284358</b>	D2 Type High Temp Governor, 105-125 PSI	BENDIX® 284358N



## BRAKE & WHEEL END

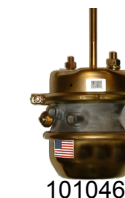
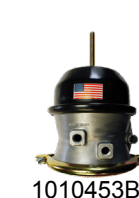
### BEARINGS

Part No.	Description
<b>HM212011</b>	Outer Bearing Cup
<b>HM212049</b>	Outer Bearing Cone
<b>HM218210</b>	Inner Bearing Cup
<b>HM218248</b>	Inner Bearing Cone
<b>HM518410</b>	Propar Bearing Cup
<b>HM518445</b>	Propar Bearing Cone
<b>SET401</b>	580/572 Bearing Set
<b>SET403</b>	594A/592A Bearing Set
<b>SET406</b>	3782/3720 Bearing Set
<b>SET413</b>	HM212049/011 Bearing Set
<b>SET414</b>	HM218248/210 Bearing Set
<b>SET415</b>	HM518445/410 Bearing Set



### BRAKE CHAMBERS

Part No.	Description	Warranty
<b>1010447</b>	30/30, Less Clevis	4 Year
<b>1010449</b>	30/30, Complete With Clevis	4 Year
<b>1010450</b>	24/24, Long Stroke, 2.5", Complete Less Clevis	4 Year
<b>1010451</b>	30/30, INTRAAX Type 3030 12.5" Rod	4 Year
<b>1010453BX</b>	30/30, Piggyback Kit, Includes Clamp & Diaphragm	4 Year
<b>1010456</b>	30/30, 3" Long Stroke Less Clevis	4 Year
<b>1010457BX</b>	30/30, Long Stroke Piggyback Kit, With Clamp & Diaphragm	4 Year
<b>1010459</b>	30/30, 2.5" Stroke, Double Clamp, Tamper Resistant	2 Year
<b>1010460</b>	30/30, 2.5" Stroke, Double Clamp, Tamper Resistant	2 Year
<b>1010470</b>	30/30, 2.5" Stroke, Sealed Unit	1 Year
<b>1010473</b>	30/30, Piggyback Kit 2.5" Stroke	1 Year
<b>1010476</b>	30/30, 3" Long Stroke, Sealed Unit	1 Year
<b>1010477</b>	30/30, Piggyback Kit 3" Long Stroke	1 Year
<b>1011900</b>	Type 30 Service Chamber 2.50" Stroke, No Clevis	2 Year
<b>1036200</b>	Type 20L Service Chamber, 2.50" Stroke	2 Year



## BRAKE & WHEEL END

### BRAKE DRUMS

Part No.	Description	Interchange
1302467	16½"×7" Hub-Pilot, Balanced, 105 lbs	Webb 56864B
1702400	16½"×7" Inboard Mount, 105 lbs	Webb 67518F
1702401	16½"×7" Inboard Mount, 109 lbs	Webb 62200F
1702402	16½"×7" Inboard Mount, 106 lbs	Webb 68730F
1702403	16½"×7" Hub-Pilot, Balanced, 108 lbs	Webb 66895B
1702404	16½"×7" Hub-Pilot, 108 lbs	Webb 60876F
1702405	16½"×7" Inboard Mount, Balanced, 99 lbs	Webb 68981B
1702407	16½"×7" Hub-Pilot, 111 lbs	Webb 66893F
1702417	16½"×7" Hub-Pilot, Balanced, 114 lbs	Webb 66884B
1702429	15"×4" Hub-Pilot, Balanced, 68 lbs	Webb 61528B
1702430	15"×4" Hub-Pilot, Balanced, 78 lbs	Webb 65548B
1702432	16½"×7" Hub-Pilot, 112 lbs	Webb 66353F
1702434	16½"×8.62" Hub-Pilot, Balanced, 121 lbs	Webb 66854B
1702435	16½"×8" Hub-Pilot, Balanced, 96 lbs	Webb 66800B



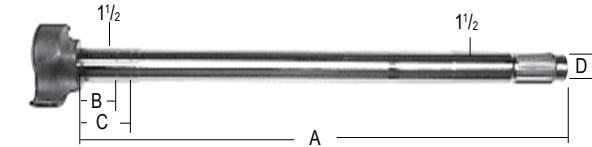
### BRAKE HARDWARE KITS

Part No.	Description
NL1616	Eaton 16½" Shoes, Single Anchor Pin Brake
NL1621BG	16½" "Q", "Q Plus" And Spicer "Fast Change" Brakes, Bagged
NL1621HD	16½" "Q", "Q Plus" And Spicer "Fast Change" Brakes, Boxed
NL1624HD	16½" HD Fruehauf XEM, Boxed
NL1650	Rockwell 15" "Q", "Q Plus", Front Brake, Boxed
NL1680BG	Same as NL1621HD Less Anchor Pins & Bushings, Bagged
NL1683	15" Eaton Single Anchor Pin Front (Steering) Brake, Boxed
NL1686	16½" Eaton ES "Extended Service" Brake, Boxed
NL1688	16½" Eaton ESII Brake, Boxed
NL1690	16½" "Q" High Mount Steer Axle Brake, Boxed



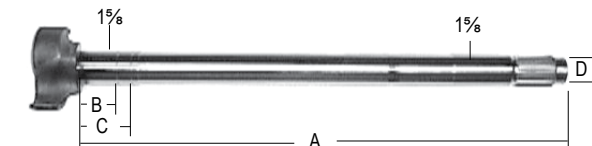
## BRAKE & WHEEL END

### CAMS & CAM KITS



1½" DIAMETER, 28 SPLINE CAMS FOR SPICER TRAILER AXLES  
16½" "XTRALIFE" BRAKES w/ DOUBLE GROOVE JOURNAL

Part No.	Side	A	B	C	D	Interchange:	Cam Kit No.
NL1380	LH	23 <sup>9</sup> / <sub>16</sub> "	1 <sup>5</sup> / <sub>8</sub> "	2 <sup>7</sup> / <sub>32</sub> "	1½"	Dana M16WKL20-236, E5526, R607183	NL1238
NL1381	RH					Dana M16WKR20-236, E5527, R607184	
NL1940	LH	24 <sup>1</sup> / <sub>16</sub> "	1 <sup>31</sup> / <sub>32</sub> "		1¼"	Meritor 2210E6869, E6081, E5510, E2445A	NL1417
NL1941	RH					Meritor 2210D6868, E6082, E5511, E2446A	
NL1970	LH	11"	2 <sup>7</sup> / <sub>16</sub> "		1¼"	Hendrickson INTRAAX S24636-1L	S23974 (Or S21181 If Before 11/24/97)
NL1971	RH					Hendrickson INTRAAX S24636-1R	
NL1958	LH	17 <sup>3</sup> / <sub>8</sub> "	1 <sup>5</sup> / <sub>8</sub> "	2 <sup>7</sup> / <sub>32</sub> "	1¼"	Meritor 2210C6867, E-2441A, 2210R8156	NL1280
NL1959	RH					Meritor 2210B6866, E-2442A, 2210Q8155	



1<sup>5</sup>/<sub>8</sub>" DIAMETER, 37 SPLINE CAMS FOR  
FRUEHAUF TRAILER AXLES - 16½" BRAKES

Part No.	Side	A	B	C	D	Interchange:	Cam Kit No.
NL1334	LH	16 <sup>1</sup> / <sub>8</sub> "	2 <sup>5</sup> / <sub>32</sub> "	1½"		Fruehauf AxA-0420-1, M563L, E1563, R607011	NL1228
NL1335	RH					Fruehauf AxA-0420-2, M563R, E1564, R607012	

1<sup>5</sup>/<sub>8</sub>" DIAMETER, 28 SPLINE CAMS FOR DANA SPICER XL TRAILER AXLE  
16½" BRAKES w/ 1<sup>5</sup>/<sub>8</sub>" BEARING JOURNAL

NL1956	LH	23 <sup>9</sup> / <sub>16</sub> "	2 <sup>7</sup> / <sub>32</sub> "	1¼"		Dana/Hend M16WKL25-236, R607231, E9735	E-9790A
NL1957	RH					Dana/Hend M16WKR25-236, R607232, E9736	



**Part No. NL4400**  
**Camshaft Tube Service Kit**

- Hendrickson INTRAAX 16.5" Brake
- Services One Camshaft
- 4-Tabbed Design

## BRAKE & WHEEL END

### HUB CAPS W/GASKET

Part No.	Description	Interchange
<b>3704009</b>	5-1/2" Bolt Circle, No Side Plug	340-4009
<b>3704024</b>	4-1/2" Bolt Circle, No Side Plug	340-4024
<b>3704195</b>	6-3/4" Bolt Circle, No Side Plug	340-4195
<b>3734009</b>	5-1/2" Bolt Circle, With Side Plug	343-4009
<b>3734024</b>	4-1/2" Bolt Circle, With Side Plug	343-4024
<b>3734195</b>	6-3/4" Bolt Circle, With Side Plug	343-4195

**Features & Benefits:**

- Die-Cast 380 Aluminum Alloy
- Resist Cracking, Warping, Breaking In Any Condition
- Individually Poly-Bagged
- Vent Plug Molded in Nitrile Rubber
- Dow Corning CALIBRE Lens, UV Stabilized



### SLACK ADJUSTERS - AUTOMATIC

Part No.	Cam Diameter - Spline	Arm Length	Interchange
<b>FC01073</b>	1 1/2" - 28	5-1/2"	R801073
<b>FC01074</b>	1 1/2" - 28	6"	R801074
<b>FC01140</b>	1 1/2" - 28	5-1/2"	AS1140
<b>FC01141</b>	1 1/2" - 28	6"	AS1141
<b>FC10211</b>	1 1/2" - 28	5-1/2"	400-10211
<b>FC10212</b>	1 1/2" - 28	6"	400-10212
<b>FC10305</b>	1 1/2" - 28	6"	400-10305



FC01073



FC01141



FC10212



FC10305

All With Clevis Included

### SLACK ADJUSTERS - MANUAL

Part No.	Diameter - Spline	Arm Length	Interchange
<b>1010800</b>	1 1/2" - 10	5", 6", 7"	KN47001
<b>1010801</b>	1 1/2" - 10	5 1/2", 6 1/2"	KN47011
<b>1010802</b>	1 1/2" - 28	5 1/2", 6 1/2"	KN44061
<b>1010803</b>	1 5/8" - 37	6"	KN44041
<b>1010804</b>	1 1/2" - 28	5", 6"	KN44051



1010800

### CLEVIS KITS

Part No.	Description	Interchange
<b>FC3000</b>	5/8" Threaded Rod, 1/2" Pin	AS3000
<b>FC3016</b>	Collar Lock, Straight Arm	AS3016
<b>FC810019</b>	ASA 5/8" Threaded Rod	R810019



FC810019

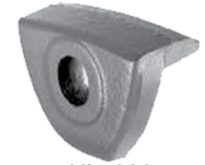


FC3000

## BRAKE & WHEEL END

### WHEEL END FASTENERS

Part No.	Description
<b>106333</b>	Wheel Nut, 22MM×1.5, 33MM Hex
<b>NL5006</b>	Rim Clamp 1 1/8", 3/4" Stud
<b>NL5008</b>	Rim Clamp 1 1/4", 3/4" Stud
<b>NL5011</b>	Rim Clamp 1 1/2", 3/4" Stud
<b>NL5015</b>	Rim Clamp 1 3/4", 3/4" Stud
<b>NL5102</b>	Spoke Stud 3/4-10 × 3" Long
<b>NL5106</b>	Stud Ser Metric 3 <sup>15</sup> / <sub>16</sub> " Lg (Dual Steel)
<b>NL5107</b>	Stud Ser Metric 4 <sup>25</sup> / <sub>32</sub> " Lg (Dual Alum)
<b>NL5401</b>	Spoke Wheel Nut 3/4-10
<b>NL5500</b>	Inner Capnut RH Dual Steel Grade 8
<b>NL5501</b>	Inner Capnut LH Dual Steel Grade 8
<b>NL5502</b>	Inner Capnut RH Steel/Alum Grade 8
<b>NL5503</b>	Inner Capnut Lh Steel/Alum Grade 8
<b>NL5510</b>	Wheel Nut Disc RH 3/4"-16"
<b>NL5511</b>	Wheel Nut Disc LH 3/4"-16"
<b>NL5512</b>	Wheel Nut Disc RH 1 1/8"-16"
<b>NL5513</b>	Wheel Nut Disc LH 1 1/8"-16"
<b>NL5532</b>	Inner Capnut RH Dual Alum Grade 8
<b>NL5533</b>	Inner Capnut LH Dual Alum Grade 8



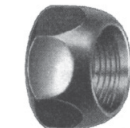
NL5006



106333



NL5500/NL5501



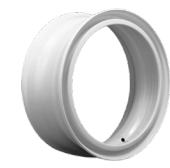
NL5512/NL5513



NL5532/NL5533

### STEEL WHEELS

Part No.	Description
<b>3217514</b>	17.5×6.75 8-Hole, Hub Pilot, White
<b>3222500</b>	22.5×8.25 Tubeless, Demountable
<b>3222512</b>	22.5×8.25 10-Hole, Hub Pilot, 2 Hand Hole, White
<b>3222515</b>	22.5×9.0 10-Hole, Hub Pilot, 5 Hand Hole, White
<b>3222522</b>	22.5×8.25 10-Hole, Stud Pilot, 2 Hand Hole, White
<b>3224512</b>	24.5×8.25 10-Hole, Hub Pilot, 2 Hand Hole, White
<b>3224522</b>	24.5×8.25 10-Hole, Stud Pilot, 2 Hand Hole, White



3222500



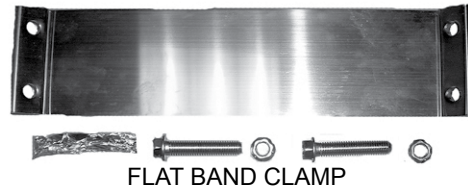
3222515



**EXHAUST**

**EXHAUST CLAMPS**

Part No.	Description
1410330	3" Stainless Steel Flat Band Clamp
1410430	3" Welded Side Saddle Clamp
1410530	3" Guillotine Zinc Plated Clamp
1410335	3.5" Stainless Steel Flat Band Clamp
1410435	3.5" Welded Side Saddle Clamp
1410535	3.5" Guillotine Zinc Plated Clamp
1410240	4" Aluminum Flat Band Clamp
1410340	4" Stainless Steel Flat Band Clamp
1410440	4" Welded Side Saddle Clamp
1410540	4" Guillotine Zinc Plated Clamp
1410640	4" Aluminum Preformed Clamp
1410740	4" Stainless Steel Preformed Clamp
1410250	5" Aluminum Flat Band Clamp
1410350	5" Stainless Steel Flat Band Clamp
1410450	5" Welded Side Saddle Clamp
1410550	5" Guillotine Zinc Plated Clamp
1410650	5" Aluminum Preformed Clamp
1410750	5" Stainless Steel Preformed Clamp



**FLEX TUBING - MUFFLER**

Part No.	Description
1410035-120	3.5" x 10' Galvanized
1410035-24	3.5" x 24" Galvanized
1410040-120	4" x 10' Galvanized
1410040-36	4" x 36" Galvanized
1410040	4" x 25' Galvanized
1410050-36	5" x 36" Galvanized
1410050	5" x 25' Galvanized
1410130-120	3" x 10' Stainless
1410130-24	3" x 24" Stainless
1410135-120	3.5" x 10' Stainless
1410135-36	3.5" x 36" Stainless
1410140-24	4" x 24" Stainless
1410140	4" x 25' Stainless
1410150-120	5" x 10' Stainless
1410150-36	5" x 36" Stainless



\*Other Lengths Available

**MUFFLER**  
**Part No. 22920W**  
 • 44.5" body  
 • 5" ID Inlet/Outlet  
 • 10.1" shell



**SAFETY PRODUCTS**

**FIRST AID KIT - TRIANGLE KIT**

**First Aid Kit**

**Part No. 1010180**

Compact 3" x 5" x 8" White Metal Case  
 With Mounting Brackets

Contents: (10 unit kit)

- 2 - 1" x 3" Bandage
- 1 - 4" Bandage Compress
- 1 - 2" Bandage Compress
- 1 - Triangular Bandage
- 1 - Eye Dressing
- 1 - Ammonia Inhalant
- 1 - Wound Wipes
- 1 - Burn Cream Packets



**Triangle Warning Kit**

**Part No. 1014509**

Three triangles packed in corrosion-proof plastic storage box. Heavy base with rubber feet helps withstand high winds. Meets or exceeds all applicable DOT, FMVSS, and state requirements.



**FLAGS - SIGNS**

Part No.	Description
1010215	14" x 72" Sign Wide Load / Oversize
1010216	18" x 84" Sign Wide Load / Oversize
1010218	Mesh Flag 18x18 With 5/8x24 Dowel
1010219	Mesh Flag 18x18 With 2 Grommets *1 Pr/Bag
1010220	Mesh Flag 18x18 With 5/8x36 Dowel





SUSPENSION & DRIVETRAIN

AIR SPRINGS

Part No.	Cross Reference		
	Firestone	ContiTech	Goodyear
FC106897	FS6897	64517	2B9-229
FC107135	FS7135	64543	2B14-360
FC107555	FS7555	64284	2B12-440
FC107795	FS7795	67705	2B10-226
FC108033	FS8033	64571	3B12-312
FC108050	FS8050	64254	1R14-039
FC108091	FS8091	64421	1R14-171
FC108708	FS8708	64638	1R13-177
FC108729	FS8729	64420	1R13-130
FC108774	FS8774	65593	1R14-172
FC108829	FS8829	64312	1R12-615
FC108944	FS8944	64401	1R12-366
FC109082	FS9082	64269	1R12-092
FC109101	FS9101	64279	1R12-103
FC109122	FS9122	64273	1R13-038
FC109192	FS9192	64323	1R12-167



AIR SPRINGS

- A perfect solution for the cost conscious customer that demands OEM quality!
- Most popular SKU coverage to support high volume, competitive price point demands
- New Life and *CONTITECH* Guarantee 100% OEM Quality

Part No.	Cross Reference		
	Firestone	ContiTech	Goodyear
FC109265	FS9265	64288	1R12-375
FC109270	FS9270	64287	1R13-119
FC109321	FS9321	64715	1R12-335
FC109367	FS9367	64716	1R12-256
FC109370	FS9370	64383	1R12-580
FC109373	FS9373	64336	1R12-403
FC109394	FS9394	64281	1R12-281
FC109648	FS9648	73770	1R12-538
FC109780	FS9780	67473	1R12-303
FC109781	FS9781	64226	1R12-603
FC109807	FS9807	68151	1R12-1047
FC109875	FS1191	73746	1R12-432
FC109921	FS9921	64402	1R12-502
FC109935	FS9935	64412	1R12-532
FC109974	FS9974	67586	1R12-1048
FC109978	FS9978	67588	-----



THE FLEETCRAFT ADVANTAGE

20+ Years of proven products!

- OEM Quality
- Aftermarket Pricing
- 100% Satisfaction guaranteed or your money back for up to 1 year with no restocking fees!



SUSPENSION & DRIVETRAIN

CENTER BEARINGS

Part No.	Description	Interchange
GCB210084-2X	Center Bearing 16N Series	CB210084-2X
GCB210121-1X	Center Bearing 17N Series	CB210121-1XSA
GCB210661-1X	Center Bearing 18N Series	CB210661-1XSA



LEVELING VALVES

Part No.	Description	Interchange
FC54007	Height Control Valve	Haldex 90054007



U-JOINTS

Part No.	Description
G5-170X	U-Joint 10N Series
G5-279X	U-Joint 1600 Series
G5-280X	U-Joint 1700 Series
G5-281X	U-Joint 1800 Series
G5-407X	U-Joint 1760 Series
G5-674X	U-Joint Easy Service 1610 Series
G5-675X	U-Joint Easy Service 1700 Series
G5-676X	U-Joint Easy Service 1800 Series
G5-677X	U-Joint Easy Service 1760 Series
G6.5-70-18X	Strap Kit 1710-1810 Series
G170-70-18X	Strap Kit For Spl17
G250-70-18X	Strap Kit For Spl25
G90-70-28X	Strap Kit For SPL90



3 IN 1 CABLE

Part No.	Description
163140	12' Spiral Wrapped Service/Emergency/ABS Cable
163141	15' Spiral Wrapped Service/Emergency/ABS Cable



Features & Benefits:

- Red & Blue Rubber SAE Hose
- Red & Blue Aluminum Gladhandle
- 7 Way ABS Cable
- Nylon Wrap (-40°)



## TRAILER PRODUCTS

### CARGO CONTROL

Part No.	Description
FC212E	2"X12' Yellow Ratchet Logistic Strap
FC216E	2"X16' Yellow Ratchet Logistic Strap
FC227FH	2"X27' Ratchet Strap W/Flat Hooks
FC230FH	2"X30' Ratchet Strap W/Flat Hooks
FC3	Weld-On Low Profile Fixed Winch
FC427FH	4"X27' Winch Strap W/Flat Hook
FC430FH	4"X30' Winch Strap W/Flat Hook
FC4SL	Standard Sliding 3606 & 3607 Track
FC5SDL	Standard Profile Sliding 3608 Track Only
FC5SSDL	Storable Sliding 3606 & 3607 Track



### ACCESSORIES

Part No.	Description
1001101	Placard Holder, PPW Alum, Full Slide-In Style
1011535	Aluminum Manifest Box 1 1/2" x 8 3/8" x 13 3/8"
1011537	Tubular Manifest Holder 1 1/2" x 9"
1011537-1	End Cap For Manifest Tube, Black Rubber
1031143	Skylight 12" Round Fiberglass
1032157	Folding Step 2 1/8" x 4 3/8"
FC-1	Document Holder, Round Valox Body
FC-1-LID	Smoked Lens Cover for Round Document Holder
FC22010/40	7-Terminal Style Junction Box



### RUBBER MUDFLAPS

Economy 1/4" "Chevron Style"

Part No.	Size
1190299-SP	24 x 24
1190300-SP	24 x 30
1190301-SP	24 x 36



### MUD FLAP FASTENER KIT

Part No. 1157019  
Bagged Kit Contains:  
4 nuts, 4 bolts & 4 washers  
50 Bags / Container



### SPRAY PAINT

Part No.	Color
1016842*	Shiny Galvanized
1210300	Gloss White
1210303	Gloss Black
1210304	Flat Black
1210306	Light Gray
1210307	Bright Silver



A high quality quick drying spray enamel that provides uniform coverage, good adhesion.  
12 - 11 oz. Net Cans Per Case  
\*13 oz. Net Cans 65% Zinc



Part No.	Color
1210311	Bright Red
1210320	School Bus Yellow
1210326	Dull Aluminum
1210340	Gray Primer
1210344	Red Primer
1210363	Ford Dark Blue

## TRAILER PRODUCTS

### DOORS - ROLL UP

#### FLEETCRAFT "GENERAL PURPOSE" DOOR ASSEMBLIES

##### GENERAL PURPOSE IN WHITE: THE LETTERS "WH" ARE AFTER THE PART NUMBER:

Example: GP90X100 is a drop in door only, and GP90X100WH is the same door in White. Then, GP90X100WHKIT comes with white drop-in door and track and counterbalance; tongue and groove panels, and 1" rollers. Drop-in door includes hardware only. 99900T is the track and operator kit. Side seals are not included. Order separately if desired.

#### "GENERAL PURPOSE" (GP) DOOR ASSEMBLIES (1" Rollers, Tongue In Groove)

Door Part No.	Nominal	Actual	Opening	Door Stack / Panel Sizes
GP90X90WH	90x90	90Wx90H	87 3/4 x 87 3/4	All panels 15"
GP90X90WHKIT	90x90	90Wx90H	87 3/4 x 87 3/4	All panels 15"
GP90X100	90x100	90Wx100H	87 3/4 x 100	1 15" Bottom, 3 15" Int., 2 11" Int., 1 18" Top
GP90X100KIT	90x100	90Wx100H	87 3/4 x 100	1 15" Bottom, 3 15" Int., 2 11" Int., 1 18" Top
GP98X105	98x105	98Wx105H	95 3/4 x 105	All panels 15"
GP98X105KIT	98x105	98Wx105H	95 3/4 x 105	All panels 15"
GP98X105WH	98x105	98Wx105H	95 3/4 x 105	All panels 15"
GP98X105WHKIT	98x105	98Wx105H	95 3/4 x 105	All panels 15"
GP98X107	98x107	98Wx107H	95 3/4 x 107	1 15" Bottom, 5 15" Int., 1 17" Top
GP98X107KIT	98x107	98Wx107H	95 3/4 x 107	1 15" Bottom, 5 15" Int., 1 17" Top
GP98X107WH	98x107	98Wx107H	95 3/4 x 107	1 15" Bottom, 5 15" Int., 1 17" Top
GP98X107WHKIT	98x107	98Wx107H	95 3/4 x 107	1 15" Bottom, 5 15" Int., 1 17" Top
GP96X112WH	96x112	96Wx112H	93 3/4 x 112	1 11" Bottom, 8 11" Int., 1 13" Top
GP96X112WH	96x112	96Wx112H	93 3/4 x 112	1 11" Bottom, 8 11" Int., 1 13" Top

#### GP COMPOSITE DOOR ASSEMBLIES (2" Rollers, Tongue In Groove, 1/2" thick panels)

GPC98X105WH	98x105	98Wx105H	95 3/4 x 105	All panels 15"
GPC98X105WHKIT	98x105	98Wx105H	95 3/4 x 105	All panels 15"
GPC98X107WH	98x107	98Wx107H	95 3/4 x 107	1 15" Bottom, 5 15" Int., 1 17" Top
GPC98X107WHKIT	98x107	98Wx107H	95 3/4 x 107	1 15" Bottom, 5 15" Int., 1 17" Top

#### "GENERAL WORK" (GW) DOOR ASSEMBLIES (2" Rollers, Tongue In Groove)

GW90X90WH	90x90	90Wx90H	87 3/4 x 87 3/4	All panels 15"
GW90X90WHKIT	90x90	90Wx90H	87 3/4 x 87 3/4	All panels 15"
GW98X107WH	98x107	98Wx107H	95 3/4 x 107	1 15" Bottom, 5 15.5" Int., 1 14" Top
GW98X107WHKIT	98x107	98Wx107H	95 3/4 x 107	1 15" Bottom, 5 15.5" Int., 1 14" Top

TRAILER PRODUCTS

DOORS - ROLL UP PANELS

TODCO-STYLE

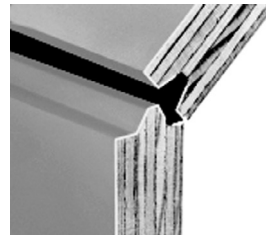
Part No.	Description
71411X98	11" Intermediate Panel
71412X98	12" Intermediate Panel
71415X98	15" Intermediate Panel
71418X98	18" Intermediate Panel
71411X98WH	11" White Intermediate Panel
71413X98WH	13" White Intermediate Panel
71412X98WH	12" White Intermediate Panel
71415X98WH	15" White Intermediate Panel
81611X90	11" Bottom (90" Wide) Panel
81611X98	11" Bottom Panel
81612X98	12" Bottom Panel
81615X90	15" Bottom Panel (90" Wide)
81615X98	15" Bottom Panel
81611X98WH	11" White Bottom Panel
81612X98WH	12" White Bottom Panel
81613X98WH	13" White Bottom Panel
81615X98WH	15" White Bottom Panel

WHITING-STYLE

34211.5X98	11.5" Intermediate Panel
34211X98WH	11" White Intermediate Panel
34212X98WH	12" White Intermediate Panel
34215X98WH	15" White Intermediate Panel
34512X98WH	12" White Bottom Panel
34515X98WH	15" White Bottom Panel



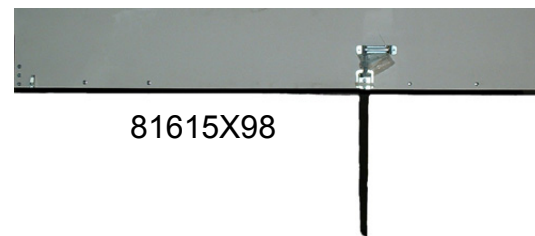
**Fleetcraft Whiting-Style Panel Specifications:**  
 No routes. 98" wide. Unless noted.  
 Primed or White. Tongue in Groove.  
 Bottom panels have bottom seal and aluminum retainer.



3/4"  
Tongue  
in  
Groove  
style

**Fleetcraft Todco-Style Panel Specifications:**  
 6" routes.  
 98" wide. Unless noted.  
 Primed or White.

Bottom panels have hardware installed on one end, come with bagged hardware, and pull strap.



81615X98

DOOR RIVETS

Part No.	Size
1026141	1"
Interchanges	
80841 / WH10-1002-3	
1026142	1-1/8"
Interchanges	
80842 / WH10-1002-36	
1026210	1-1/4"
Interchanges	
89210 / WH10-1002-29	

**NOTE: We Stock A Full Line Of Rivets & Fasteners!**

TRAILER PRODUCTS

DOORS - ROLL UP ACCESSORIES (TODCO STYLE)



**Counterbalance Assembly**  
 Part No. Interchanges with  
 1026115 59292  
 With 1 3/4" diameter spring, 98" shaft  
**Counterbalance Shaft**  
 1026102 51037



**Bearing Assembly**  
 Part No. Interchanges with  
 1026103 51038  
 For 1" diameter shaft



**Cable Drums**  
 Part No. Interchanges with  
 1026153 59157-3 (Curbside)  
 1026154 59157-4 (Roadside)



**Rear Lock**  
 Part No. Interchanges with  
 1026138 69571  
 Spring assisted for positive lock,  
 Cast steel, zinc plated.



**Rear Lock Keeper**  
 Part No. Interchanges with  
 1026139 69572  
 Cast, zinc plated



**Lift handle**  
 Part No. Interchanges with  
 1026128 61401  
 Heavy duty, zinc plated

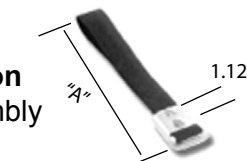


**Safety Chain Assembly(Chain & Keeper)**  
 Part No. Interchanges with  
 1026131 69020  
 Cast steel, spring loaded, Zinc finish



**Keeper Assembly**  
 1026121 61223, WH4110  
**Chain Assembly**  
 1026122 61229, WH4126

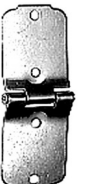
**Door Pull Strap Assembly**  
 Part No. "A" Description  
 1026393 30" Strap assembly



**Top Fixture Assembly**  
 Includes base, slide, & hardware  
 Part No. Interchanges with  
 1026136 69433  
 Top fixture base Only  
 1026134 69432  
 Slide Only  
 1026431 69431



**Center Hinge**  
 Part No. Interchanges with  
 1026119 61196  
 Zinc plated - Pack = 25



**End Hinge**  
 Part No. Interchanges with  
 1026132 69035  
 Zinc plated - Pack = 25



**Bottom Fixture**  
 Part No. Interchanges with  
 1026123 61352  
 Zinc plated



**Anchor Bracket - for door cable**  
 Part No. Interchanges with  
 1026120 61204  
 Zinc plated



**Steel Roller, 1" Diameter**  
 Part No. Application  
 1190653 Steel - Pack = 50



**Seals**  
 Part No. Type / Interchange  
 1026390 (A) Side 116" / 61390  
 1026840 (B) Bottom 98" / 80840  
 1027001 (C) Head 98" / 70001



**Pull Strap Retainer**  
 Part No. Interchanges with  
 1026143 69832  
 Galvanized;  
 universal applications





**TRAILER PRODUCTS**

**DOORS - ROLL UP ACCESSORIES (WHITING STYLE)**

**Balancer Assembly**

Double cable style.

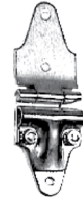
Part No.	Description
1027087	87" long shaft .187 x 31" spring
1027096	96" long shaft .187 x 31" spring



**End Hinge and Roller Cover**

Part No. Interchanges with Complete Assembly

1027119	WH1209A
1027207	WH1207
1027208	WH1208



**Cable Drums**

Part No.	Interchanges with
1027547	WH2547
1027548	WH2548



**Center Hinge**

Part No. Interchanges with  
1027115 WH15,  
Zinc plated



**Whiting Style Rear Lock & Handle Keeper**

Part No.	Description
1027577	Interchanges w/ WH77 lock
1027578	Handle keeper, use w/ lock



**Top Closure Assembly**

Adjusts top panel for firm seal  
Part No. Interchanges with  
1027944 WH6944



**Lift Handle**

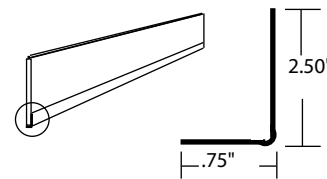
Part No.	Interchanges with
1027715	WH1715



**Bottom Angle**

Steel angle used on bottom of bottom panels. For GP Door or "T" Style applications. Interchanges 61191/WH4034

Part No.	Description
1026118	95 1/4" long, zinc plated



**Door Pull Strap Assembly**

Part No.	"A"	Description
1518	18"	Strap assembly
1524	24"	Strap assembly
1532	32"	Strap assembly



**U-BOLT**

Part No.	Description
1027705	1-1/2" (WH70-5)



**Steel & Nylon Rollers, 2" Diameter**

Part No.	Application
1190664	Steel
1190654	Nylon



**DOOR & OPERATOR MULTI-PURPOSE SPRAY LUBE**

Part No. 1190620  
16 oz Net Spray Can



**TRAILER PRODUCTS**

**LANDING GEAR**

**With FLEETCRAFT Landing Gear SETS, KITS, GEARSIDE and NONGEAR LEGS:**

PUT a 'K' on the end of the part number to get the Gearside and Nongear landing along with a crank handle, brace ears, and cross shaft. Ex: 1013912K

Put NOTHING on the end to get just the gearside and nongear legs - legs only. Ex: 1013912

For a **gearside leg**, put a '-2' on the end of the part number. Ex: 1013912-2

For a **nongear leg**, put a '-1' on the end of the part number. Ex: 1013912-1

If you would like a different crank handle than what comes in the kit, many landing gear sets have that option.

**Classic - The Original**

Part No.	Description
1013912	2-Shaft With 10x10 4.5" Tall Sand Shoe, 16.87" Travel, Universal Mount
1013916	2-Shaft With 10x10 Round Cushion Foot Shoe 16.87" Travel, Universal Mount
1013932	2-Shaft With 10x10 2.5" Tall Low Profile Sand Shoe, 16.87" Travel, Universal Mount

**Classic - Three Shaft**

1013962	3-Shaft With 10x10 4.5" Tall Sand Shoe, 16.87" Travel, Universal Mount
1013964	3-Shaft With 10x10 2.5" Tall Low Profile Sand Shoe, 16.87" Travel, Universal Mount

**The J-Model - Internal Gearing**

1013992	J-Model, 4.5" Tall 10x10 Sand Shoe, 17" Travel, Outside Mount
1013993	J-Model, 10x10 Cushion-Foot Shoe, 17" Travel, Outside Mount
1013994	J-Model, 10x10 Lo-Pro Cushion-Foot Shoe, 17" Travel, Inside Mount
1013995	J-Model, 4.5" Tall 10x10 Sand Shoe, 17" Travel, Universal Mount
1013996	J-Model, 4.5" Tall 10x10 Sand Shoe, 19" Travel, Outside Mount
1013997	J-Model, 2" Tall 10x10 Sand Shoe, 17" Travel, Outside Mount
1013998	J-Model, 10x10 Lo-Pro Cushion-Foot Shoe 17" Travel, Universal Mount



THE ORIGINAL



THREE SHAFT



THE J-MODEL

These landing gear have different leg travels and load capacities. This is a listing to let you know what we have in choices of Landing Gear. All of these Landing Gear have more part numbers than the ones listed here, changing the footwear, travel, or capacity. As your landing gear headquarters, we add new legs all the time!

## TRAILER PRODUCTS

### LANDING GEAR ACCESSORIES

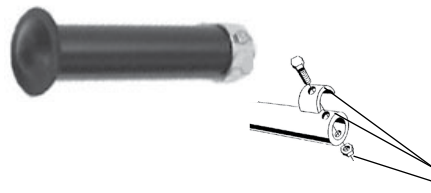
#### SANDSHOES: STANDARD AND SPECIAL USE



Part No.	Pad Size	Ground to Axle Center	Gussets	Notes
1011225	10" x 10"	4-1/2"	Single	Standard Duty
1011226	10" x 12"	4-1/2"	Single	Standard Duty
1011227	12" x 12"	2-1/2"	Single	LoPro, Std Duty
1011228	12" x 12"	4-1/2"	Single	Standard Duty
1011229	12" x 12"	4-1/2"	Double	Heavy Duty
1011230	10" x 10"	4-1/2"	Double	Heavy Duty
1011231	10" x 12"	2-1/2"	None	Low Profile
1011310	10" x 10"	1-3/4"	None	Lo Pro. 7ga. w/patch

#### SAND SHOE AXLES

All axles include collar assembly, except solid axles which have cotter pin and washer.



Part No.	Description	Length	Comment
1011218	Dolly Wheel Axle	15-3/8"	For wheel app.
1011219	Sand Shoe Axle	14-7/8"	Solid Axle
1011221	Sand Shoe Axle	8-1/2"	schedule 40
1011223	Sand Shoe Axle	8-1/2"	schedule 80
1011223-HD	Sand Shoe Axle	8-1/2"	schedule 160
1011232	Sand Shoe Axle	8-3/8"	Solid Axle
1011217	Collar Assembly	1/2"	collar parts only!

#### Cross Shaft - 3 piece

Part No.	Description
9260-3	"A"= 53" to 72" 3 Pc.

Inner Tube Dia. 1.25" O.D.  
Outer Tube Dia. 1.50" O.D.

#### Cross Shafts - 1 piece

Part No.	Description
1011235	"A"=68" Fixed Length
LG0094-8050	"A"=80.5" Fixed Length

#### Standard Duty 2 Piece Adjustable Braces

Part No.	"A" Dimension
1012589	26" to 41"
1012590	42" to 57"
1012594	25" to 34"
1012596	20" to 24"
1190656	58" to 72"

Inner Tube 1.50" O.D.,  
Outer Tube 1.75" Sched 40 Pipe

#### Heavy Duty 2 Piece Adjustable Braces

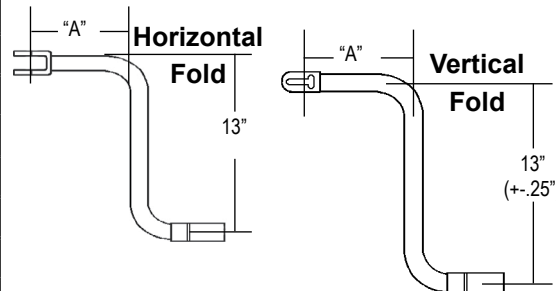
Part No.	"A" Dimension
1012591	26" to 41"
1012592	35" to 54"
1011233	56" to 72"

Inner Tube 2.0" O.D.,  
Outer Tube 2.0" Sched 40 Pipe



Part No.	Description	Size
1014438	Crank, Vertical Fold	7.5"
1014442	Crank, Horiz. Fold	7.5"
1014439	Crank, Vertical Fold	11.5"
1014444	Crank, Horiz. Fold	12"
1014445	Crank, Vertical Fold	15"
1014446	Crank, Horiz. Fold	15"
1014440	Crank, Vertical Fold	21"
1014441	Crank, Horiz. Fold	21"

#### CRANK HANDLES



#### L/G BOLT KIT

Part No. 1157014  
For One Leg Installation  
Ten (10) 5/8"-18 X 1 1/2"  
Grade 5 Hex Bolts,  
Nylon Insert Lock Nuts



## TRAILER PRODUCTS

### GLADHANDS

Part No.	Description
1010024	Gladhand Seal with Dust Flap
1010028	Gladhand Seal, Wide Lip
1010029	Gladhand Seal, Narrow Lip
1010030	Gladhand Seal, Blue Polyurethane
1010031	Gladhand Seal, Red Polyurethane
1010032	Gladhand Seal, Black Polyurethane
1010033	Gladhand Grip, 1-Red & 1-Blue
1011440	37° Service Gladhand Bracket Mnt Filtered
1011441	37° Emergency Gladhand Bracket Mnt Filtered
1011450	Universal Gladhand Aluminum
1011451	Emergency Gladhand Aluminum
1011452	Service Gladhand Aluminum
1011455-141	Gladhand Lock Keyed 141
1011455-147	Gladhand Lock Keyed 147
1011455-150	Gladhand Lock Keyed 150
1011455-156	Gladhand Lock Keyed 156
1011455-157	Glad Hand Lock Keyed 157



### POWER CORDS

Part No.	Description	Interchange
1010185	12' Electrical Cable, 6/14GA-1/12GA, with Metal Plugs	Phillips 24-4321
1010186	12' Electrical Cable, t6/12GA-1/10GA, with Metal Plugs	Phillips 22-4321
1010187	15' Electrical Cable, 6/14GA-1/12GA, with Metal Plugs	Phillips 24-4621
1010188	15' Electrical Cable, 6/12GA-1/10GA, with Metal Plugs	Phillips 22-4621
1010194	15' Dual Pole Liftgate Cable	Phillips 23-2626
1010195	12' Single Pole Plug Liftgate Cable	Phillips 23-4325
1010197	15' ABS Electrical Cable, 48" Lead, with Perma Plugs	Phillips 30-9920
1010403	3/8" Hose Separator	Tramec 34020
1010404	1/2" Hose Separator	Tramec 34021
1015720	7-Way Receptacle	Phillips 15-720
1015730	7-Way Receptacle With Cable Guard	Phillips 15-730



**TRAILER PRODUCTS**

**PRIMARY WIRE / CABLE TIES**

Part No.	Description
1031531	14GA White 100'
1031532	14GA Black 100' Roll
1031533	14GA Yellow 100' Roll
1031534	14GA Red 100' Roll
1031535	14GA Green 100' Roll
1031536	14GA Brown 100' Roll
1031537	14GA Blue 100' Roll
1031538	12GA Black 100' Roll
1031539	12GA Blue 100' Roll
1031540	12GA Brown 100' Roll
1031541	12GA Green 100' Roll
1031542	12GA Red 100' Roll
1031543	12GA White 100' Roll
1031544	12GA Yellow 100' Roll
1031545	10GA Black 100' Roll
1031549	10GA Red 100' Roll
1031550	10GA White 100' Roll

Part No.	Description
ZT120-15BK	120# 15" Black
ZT120-15WH	120# 15" Natural
ZT175-24BK	175# 24" Black U.V.
ZT50-11BK	50# 11" Black
ZT50-11WH	50# 11" Natural
ZT50-14BK	50# 14" Black
ZT50-14WH	50# 14" Natural
ZT50-7BK	50# 7" Black
ZT50-7WH	50# 7" Natural



**WIRE & CABLE**

Part No.	Description
1010126	Wire Cable 7Con Trlr 6/14-1/12GA 100' Roll
1011410	Wire Cable 6/12-1/10 GA 100' Roll
1011410-500	Wire Cable 6/12-1/10 GA 500' Roll
1011861	Wire Cable 4-14GA 100' Roll
1011861-500	Wire Cable 4-14GA 500' Roll
1031503	Cable Starter 4GA Red 25' Per Box
1031504	Cable Starter 4GA Black 25' Per Box
1031505	Cable Starter 2GA Red 25' Per Box
1031506	Cable Starter 2GA Black 25' Per Box
1031510	Cable Starter 1/0 Black 25' Per Box
1031511	Cable Starter 2/0 Red 25' Per Box
1031512	Cable Starter 2/0 Black 25' Per Box
1031514	Cable Starter 3/0 Black 25' Per Box
1031516	Cable Starter 4/0 Black 25' Per Box
1094755	Wire Cable Trlr 14GA-6 100' Roll



1010126



1031511



1031512

**TRAILER PRODUCTS**

**FLOOR SCREWS - RIVETS**

Part No.	Description
1013492-100	Screw Floor Torx 1/4-20 x 1", 100 Per Bag
1013493-100	Screw Floor Torx 1/4-20 x 1 1/2", 100 Per Bag
1013494-100	Screw Floor Torx 1/4-20 x 2", 100 Per Bag
1013495-100	Screw Floor Torx 1/4-20 x 2 1/2", 100 Per Bag
1013496-100	Screw Floor Torx 1/4-20 x 3", 100 Per Bag
1013498-50	Screw Floor Torx 1/4-20 x 4", 50 Per Bag
1013500-50	Screw Floor Torx 1/4-20 x 5", 50 Per Bag
1013502-50	Screw Floor Torx 1/4-20 x 6", 50 Per Bag
1025371-100	Screw Floor Torx 5/16-18 x 2", 100 Per Bag
1025373-100	Screw Floor Torx 5/16-18 x 2 1/2"
1025374-100	Screw Floor Torx 5/16-18 x 3"
1026075	Screw Plywood #10 x 3/4", 500 Per Box
1026080	Screw Plywood #10 x 1", 500 Per Box
1026085	Screw Plywood #10 x 1-1/4", 500 Per Box

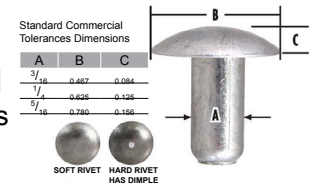
TORX® Drive Flat Head Floor Screws

- Positive TORX Drive
- Easy trouble-Free Installation
- Phosphate and Oil Finish
- Available In Bulk And Plastipack

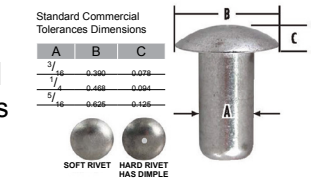


Part No.	Description
1025900	Rivet Buck Hard 3/16x3/8 Braz Head
1025901	Rivet Buck Soft 3/16x3/8 Braz Head
1025902	Rivet Buck Hard 3/16x7/16 Braz Head
1025903	Rivet Buck Soft 3/16x7/16 Braz Head
1025904	Rivet Buck Hard 3/16x1/2 Braz Head
1025907	Rivet Buck Hard 3/16x5/8 Braz Head
1025916	Rivet Buck Hard 3/16x7/16 Univ Head
1025921	Rivet Buck Hard 3/16x3/8 Mod Braz Head
1025923	Rivet Buck Hard 3/16x1/2 Mod Braz Head
1025909	Rivet Buck Hard 1/4x3/8 Braz Head
1025910	Rivet Buck Hard 1/4x1/2 Braz Head
1025912	Rivet Buck Hard 1/4x5/8 Braz Head
1025914	Rivet Buck Hard 1/4x3/4 Braz Head
1025915	Rivet Buck Hard 1/4x7/8 Braz Head
1025919	Rivet Buck Hard 1/4x1/2 Univ Head
1025920	Rivet Buck Hard 1/4x5/8 Univ Head
1025924	Rivet Buck Hard 1/4x3/8 Mod Braz Head
1025925	Rivet Buck Hard 1/4x1/2 Mod Braz Head
1025927	Rivet Buck Hard 1/4x3/4 Mod Braz Head
1025938	Rivet Buck Hard 3/8x3/4 Univ Head

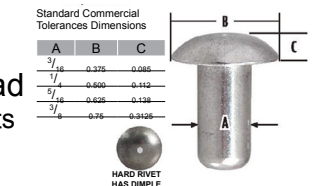
Standard Brazier Head Aluminum Rivets 2 lb. Pack



Modified Brazier Head Aluminum Rivets 2 lb. Pack



Standard Universal Head Aluminum Rivets 2 lb. Pack







PART NUMBER INDEX

1001101.....17	1011232.....23	1014445.....23	1027115.....21	1210344.....17
1010024.....24	1011233.....23	1014446.....23	1027119.....21	1210363.....17
1010028.....24	1011235.....23	1014509.....14	1027207.....21	1302467.....9
1010029.....24	1011310.....23	1015720.....24	1027208.....21	1410035-120.....13
1010030.....24	1011410.....25	1015730.....24	1027547.....21	1410035-24.....13
1010031.....24	1011410-500.....25	1016842.....17	1027548.....21	1410040-120.....13
1010032.....24	1011440.....24	1025371-100.....26	1027577.....21	1410040-36.....13
1010033.....24	1011441.....24	1025373-100.....26	1027578.....21	1410040.....13
1010126.....25	1011450.....24	1025374-100.....26	1027705.....21	1410050-36.....13
1010180.....14	1011451.....24	1025900.....26	1027715.....21	1410050.....13
1010185.....24	1011452.....24	1025901.....26	1027944.....21	1410130-120.....13
1010186.....24	1011455-141.....24	1025902.....26	1031143.....17	1410130-24.....13
1010187.....24	1011455-147.....24	1025903.....26	1031503.....25	1410135-120.....13
1010188.....24	1011455-150.....24	1025904.....26	1031504.....25	1410135-36.....13
1010194.....24	1011455-156.....24	1025907.....26	1031505.....25	1410140-24.....13
1010195.....24	1011455-157.....24	1025909.....26	1031506.....25	1410140.....13
1010197.....24	1011535.....17	1025910.....26	1031510.....25	1410150-120.....13
1010215.....14	1011537.....17	1025912.....26	1031511.....25	1410150-36.....13
1010216.....14	1011537-1.....17	1025914.....26	1031512.....25	1410240.....13
1010218.....14	1011861.....25	1025915.....26	1031514.....25	1410250.....13
1010219.....14	1011861-500.....25	1025916.....26	1031516.....25	1410330.....13
1010220.....14	1011900.....8	1025919.....26	1031531.....25	1410335.....13
1010403.....24	1012589.....23	1025920.....26	1031532.....25	1410340.....13
1010404.....24	1012590.....23	1025921.....26	1031533.....25	1410350.....13
1010447.....8	1012591.....23	1025923.....26	1031534.....25	1410430.....13
1010449.....8	1012592.....23	1025924.....26	1031535.....25	1410435.....13
1010450.....8	1012594.....23	1025925.....26	1031536.....25	1410440.....13
1010451.....8	1012596.....23	1025927.....26	1031537.....25	1410450.....13
1010453Bx.....8	1013492-100.....26	1025938.....26	1031538.....25	1410530.....13
1010456.....8	1013493-100.....26	1026075.....26	1031539.....25	1410535.....13
1010457Bx.....8	1013494-100.....26	1026080.....26	1031540.....25	1410540.....13
1010459.....8	1013495-100.....26	1026085.....26	1031541.....25	1410550.....13
1010460.....8	1013496-100.....26	1026102.....20	1031542.....25	1410640.....13
1010470.....8	1013498-50.....26	1026103.....20	1031543.....25	1410650.....13
1010473.....8	1013500-50.....26	1026115.....20	1031544.....25	1410740.....13
1010476.....8	1013502-50.....26	1026118.....21	1031545.....25	1410750.....13
1010477.....8	1013912.....22	1026119.....20	1031549.....25	1518.....21
1010800.....11	1013916.....22	1026120.....20	1031550.....25	1524.....21
1010801.....11	1013932.....22	1026121.....20	1032157.....17	1532.....21
1010802.....11	1013962.....22	1026122.....20	1036200.....8	1702400.....9
1010803.....11	1013964.....22	1026123.....20	106333.....12	1702401.....9
1010804.....11	1013992.....22	1026128.....20	1094755.....25	1702402.....9
1011120.....4	1013993.....22	1026131.....20	1157014.....23	1702403.....9
1011122.....4	1013994.....22	1026132.....20	1157019.....17	1702404.....9
1011123.....4	1013995.....22	1026134.....20	1190299-SP.....17	1702405.....9
1011124.....4	1013996.....22	1026136.....20	1190300-SP.....17	1702407.....9
1011125.....4	1013997.....22	1026138.....20	1190301-SP.....17	1702417.....9
1011126.....4	1013998.....22	1026139.....20	1190620.....21	1702429.....9
1011217.....23	1014307-150.....4	1026141.....19	1190653.....20	1702430.....9
1011218.....23	1014307-25.....4	1026142.....19	1190654.....21	1702432.....9
1011219.....23	1014307-250.....4	1026143.....20	1190656.....23	1702434.....9
1011221.....23	1014307-50.....4	1026153.....20	1190664.....21	1702435.....9
1011223.....23	1014310-250.....4	1026154.....20	1210300.....17	1610004-100.....4
1011223-HD.....23	1014310-25.....4	1026210.....19	1210303.....17	1610004Y-100.....4
1011225.....23	1014310-50.....4	1026390.....20	1210304.....17	1610006-100.....4
1011226.....23	1014438.....23	1026393.....20	1210306.....17	1610006BLUE-100..4
1011227.....23	1014439.....23	1026431.....20	1210307.....17	1610006G-100.....4
1011228.....23	1014440.....23	1026840.....20	1210311.....17	1610006OR-100.....4
1011229.....23	1014441.....23	1027001.....20	1210320.....17	1610006R-100.....4
1011230.....23	1014442.....23	1027087.....21	1210326.....17	1610008-100.....4
1011231.....23	1014444.....23	1027096.....21	1210340.....17	1610010-50.....4

PART NUMBER INDEX

1615012.....7	E-9790A.....10	FC109869.....7	FC54007.....16	GW98X107WHKIT .18
1615012B.....7	FC-1-LID.....17	FC109875.....15	FC54079.....6	HM212011.....8
1615012R.....7	FC-1.....17	FC109921.....15	FC54088.....6	HM212049.....8
1615040.....7	FC01073.....11	FC109935.....15	FC65225.....7	HM218210.....8
1615040B.....7	FC01074.....11	FC109974.....15	FC72420.....6	HM218248.....8
1615040R.....7	FC01140.....11	FC109978.....15	FC810019.....11	HM518410.....8
163140.....16	FC01141.....11	FC12104.....5	FC950011.....7	HM518445.....8
163141.....16	FC022105.....7	FC12105.....5	FC950068.....7	LG0094-8050.....23
16324.....4	FC065066.....5	FC131081.....5	FC955205.....7	NL1228.....10
16328.....4	FC065067.....5	FC18530.....7	FR-RB01.....27	NL1238.....10
16336.....4	FC065104.....5	FC212E.....17	FR-RB02.....27	NL1280.....10
16342.....4	FC065145.....5	FC21965.....17	G170-70-18X.....16	NL1334.....10
16348.....4	FC065146.....5	FC22010/40.....17	G250-70-18X.....16	NL1335.....10
16360.....4	FC065186.....5	FC227FH.....17	G5-170X.....16	NL1380.....10
16624.....4	FC065187.....5	FC228750.....5	G5-279X.....16	NL1381.....10
16628.....4	FC065437.....5	FC229635.....5	G5-280X.....16	NL1417.....10
16636.....4	FC065439.....5	FC229859.....5	G5-281X.....16	NL1616.....9
16642.....4	FC065612.....7	FC229860.....5	G5-407X.....16	NL1621BG.....9
16648.....4	FC065624.....5	FC23000.....5	G5-674X.....16	NL1621HD.....9
16660.....4	FC065661.....5	FC23010.....5	G5-675X.....16	NL1624HD.....9
22920W.....13	FC101112.....5	FC230FH.....17	G5-676X.....16	NL1650.....9
31402.....4	FC101622.....5	FC26020.....5	G5-677X.....16	NL1680BG.....9
31403.....4	FC101818.....5	FC275491.....7	G6.5-70-18X.....16	NL1683.....9
3217514.....12	FC10211.....11	FC276566.....6	G90-70-28X.....16	NL1686.....9
3222500.....12	FC10212.....11	FC276567.....6	GCB210084-2X.....16	NL1688.....9
3222512.....12	FC102626.....5	FC277147.....6	GCB210121-1X.....16	NL1690.....9
3222515.....12	FC103009.....5	FC277863.....6	GCB210661-1X.....16	NL1940.....10
3222522.....12	FC103010.....5	FC278614.....6	GD-BR03-626.....27	NL1941.....10
3224512.....12	FC103028.....5	FC278615.....6	GD-CM01.....27	NL1956.....10
3224522.....12	FC10305.....11	FC279000.....6	GD-DS01.....27	NL1957.....10
34211.5X98.....19	FC103061.....5	FC279416.....6	GD-NR03.....27	NL1958.....10
34211X98WH.....19	FC103081.....5	FC280809.....6	GD-NR05.....27	NL1959.....10
34212X98WH.....19	FC106897.....15	FC281865.....6	GD-RB01.....27	NL1970.....10
34215X98WH.....19	FC107135.....15	FC281923.....6	GD-RB02.....27	NL1971.....10
34512X98WH.....19	FC107555.....15	FC284142.....6	GD-RB03.....27	NL4400.....10
34515X98WH.....19	FC107695.....7	FC284358.....6	GD-RP01.....27	NL5006.....12
3704009.....11	FC107795.....15	FC284760.....6	GD-RP02.....27	NL5008.....12
3704024.....11	FC108033.....15	FC28500.....6	GD-RP03.....27	NL5011.....12
3704195.....11	FC108050.....15	FC28510.....6	GD-SS02.....27	NL5015.....12
3734009.....11	FC108091.....15	FC28520.....6	GP90X90WH.....18	NL5102.....12
3734024.....11	FC108708.....15	FC28600.....6	GP90X90WHKIT.....18	NL5106.....12
3734195.....11	FC108729.....15	FC28601.....6	GP90X100.....18	NL5107.....12
71411X98.....19	FC108774.....15	FC286171.....6	GP90X100KIT.....18	NL5401.....12
71412X98.....19	FC108829.....15	FC286364.....6	GP98X105.....18	NL5500.....12
71415X98.....19	FC108944.....15	FC286500.....6	GP98X105KIT.....18	NL5501.....12
71418X98.....19	FC109082.....15	FC288239.....6	GP98X105WH.....18	NL5502.....12
71411X98WH.....19	FC109101.....15	FC288605.....6	GP98X105WHKIT.....18	NL5503.....12
71413X98WH.....19	FC109122.....15	FC289144.....6	GP98X107.....18	NL5510.....12
71412X98WH.....19	FC109192.....15	FC289714.....6	GP98X107KIT.....18	NL5511.....12
71415X98WH.....19	FC109265.....15	FC3.....17	GP98X107WH.....18	NL5512.....12
81611X90.....19	FC109270.....15	FC3000.....11	GP98X107WHKIT.....18	NL5513.....12
81611X98.....19	FC109321.....15	FC3016.....11	GP96X112WH.....18	NL5532.....12
81612X98.....19	FC109367.....15	FC30400.....6	GP96X112WH.....18	NL5533.....12
81615X90.....19	FC109370.....15	FC4017A.....6	GPC98X105WH.....18	S21181.....10
81615X98.....19	FC109373.....15	FC427FH.....17	GPC98X105WHKIT.....18	S23944.....10
81611X98WH.....19	FC109394.....15	FC430FH.....17	GPC98X107WH.....18	SET401.....8
81612X98WH.....19	FC109648.....15	FC4SL.....17	GPC98X107WHKIT.....18	SET403.....8
81613X98WH.....19	FC109780.....15	FC5SDL.....17	GW90X90WH.....18	SET406.....8
81615X98WH.....19	FC109781.....15	FC5SSDL.....17	GW90X90WHKIT.....18	SET413.....8
9260-3.....23	FC109807.....15	FC5008414.....7	GW98X107WH.....18	SET414.....8



**FLEETCRAFT**

QUALITY PARTS FOR THE TRUCKING INDUSTRY

